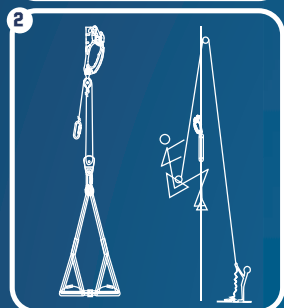
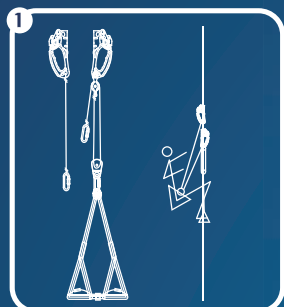


SMAK # 200.SET.02

sailing mast ascender KONG



896.S
EN 567

NEW!

896.D
EN 567

821.01
EN 12278

994
EN 12278

600.08
EN 12275
EN 362

200.V1

600.08
EN 12275
EN 362

600.08
EN 12275
EN 362

8C.063
EN 12277
(on request)



bag included



YACHTING NEWS 2010

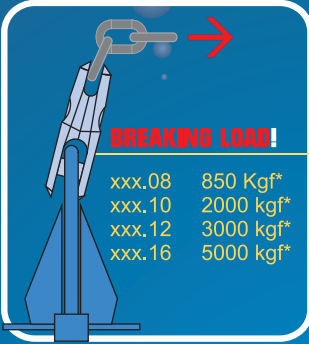
100%
KONG
WWW.KONG.IT

SWIVEL ANCHOR CONNECTORS

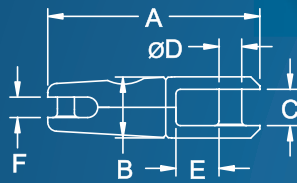
STAINLESS STEEL AISI 316



UP TO
3/4" CHAINS (20mm)
UP TO
150 KG ANCHORS



	BREAKING LOAD!
xxx.08	850 Kgf*
xxx.10	2000 kgf*
xxx.12	3000 kgf*
xxx.16	5000 kgf*



	mm	A mm	B mm	C mm	ØDmm	E mm	F mm		USE	g
644.08	6÷8	93	28	16	10	19	9	2500 Kgf*	850 Kgf*	240
644.10	8÷12	117	36	22	13	23	13	5000 Kgf*	2000 Kgf*	550
644.12	12÷14	155	66	35	18	30	17	9500 Kgf*	3000 Kgf*	2350
644.16	16÷20	190	86	43	22	42	20	20000 Kgf*	5000 Kgf*	5000

*1 Lbsf= 0,450 Kgf

ELASTIC TETHERS



CE EN 1095



284.SET.E



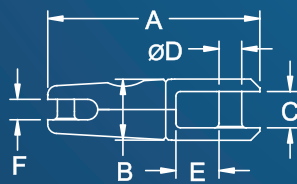
283.SET.E

FIX ANCHOR CONNECTORS

STAINLESS STEEL AISI 316



CARBON STEEL



	mm	A mm	B mm	C mm	ØDmm	E mm	F mm		USE	g
444 8	6 7 8	80	28	16	10	19	9	2.500 Kgf*	850 Kgf*	180
643 8	6 7 8	80	28	16	10	19	9	2.500 Kgf*	850 Kgf*	180
444 10	8 10 12	100	37	22	13	23,5	13	5.000 Kgf*	2.000 Kgf*	410
643 10	8 10 12	100	37	22	13	23,5	13	5.000 Kgf*	2.000 Kgf*	410
444 12	12 13 14	144	55	31	26	16	16	9.500 Kgf*	3.000 Kgf*	1.440

* 1 Lbsf = 0,450 Kgf

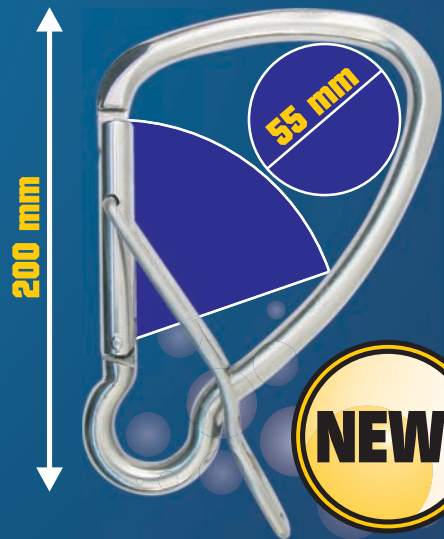
MOORING HOOK



650.201



STAINLESS STEEL AISI 316



CE EN 795/B
24 kN
590 g